

SERIES LED LIGHTING TYPE „CASSIOPEIA“

Series include following types of products:

Cassiopeia 36W28-230 and Cassiopeia 52W42-230;

Name of Producer: “INDUSTRIAL LIGHTING” LTD

Purpose:

The Series LED lighting type CASSIOPEYA is created as high class office lightning designed to satisfy highest requirements for efficiency, design and quality.

In the production of the product are used only high quality elements of European producers, as follows:

LEDs: “Osram GmbH” Germany;

Power supply: “Osram GmbH” Germany;

Diffusor and cover: Bayer AG – Germany;

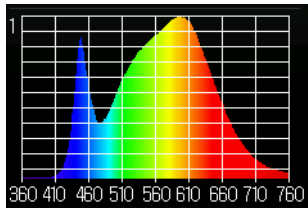
Technical parameters according producers documentation:

LED light for indoor and outdoor use with dimensions 595/595/65mm and weight of 4 kg.

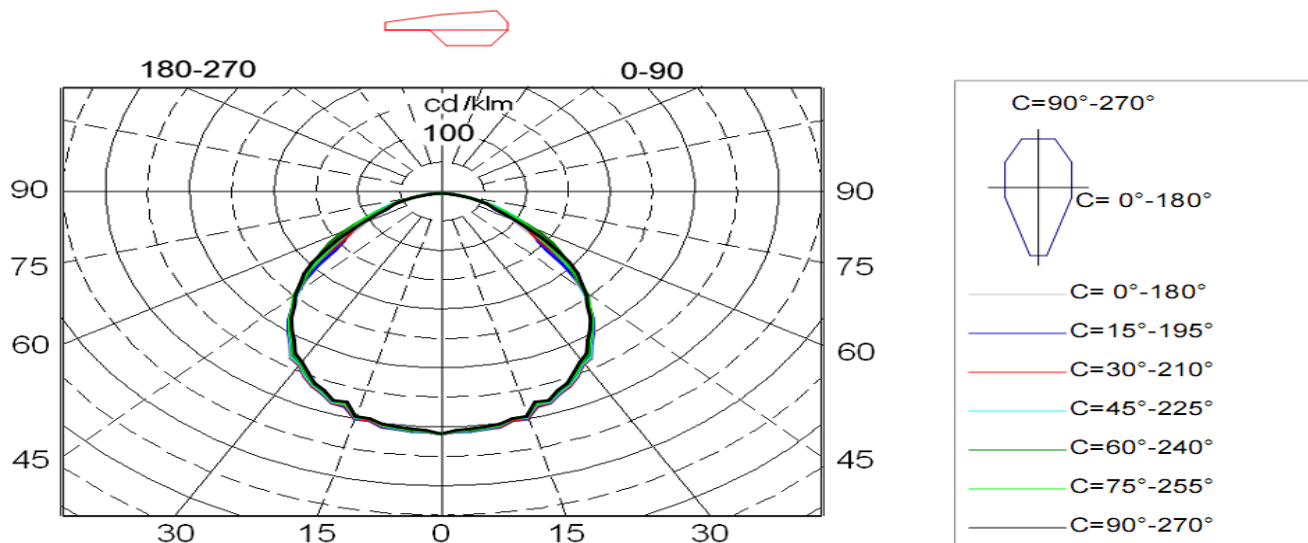


Test results

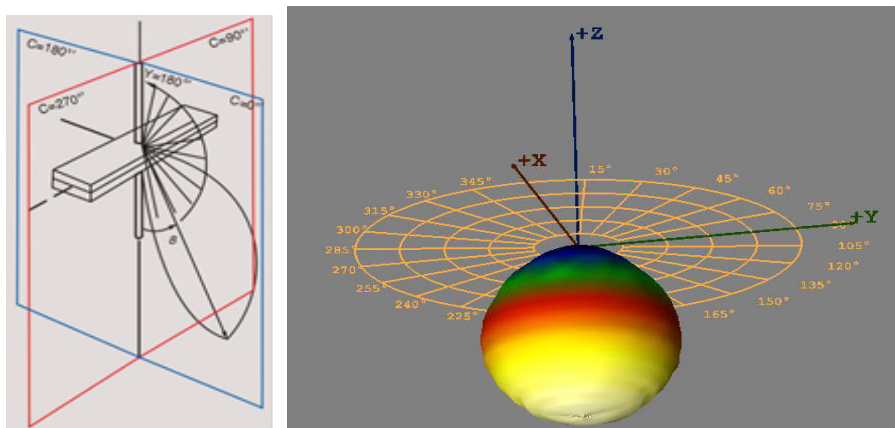
Product name Cassiopeia	36W28-230	52W42-230	
Operating voltage	AC 230 V		
Operating Current	AC 0.524A	AC 0.524A	
Wattage including ballast (watts)	36 W	52 W	
Power factor	0.96		
Color temperature	4080 K		
Color rendering index CRI	80		
color coordinates CIE 1931	x=0.3798, y=0.3857		
color coordinates CIE 1976	u'=0.2212, v'=0.5054		
Luminous flux emitted by a luminaire	3528 lm	4893 lm	
Light output of the luminaire	98 lm /W	94.1 lm/W	



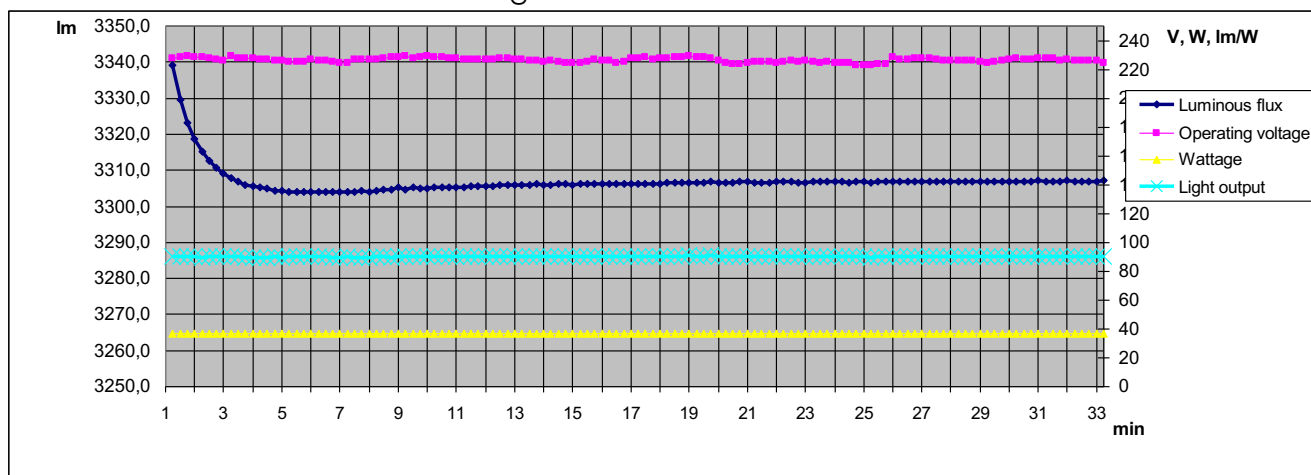
Spectrum of light
K.puls. = 0.4 %



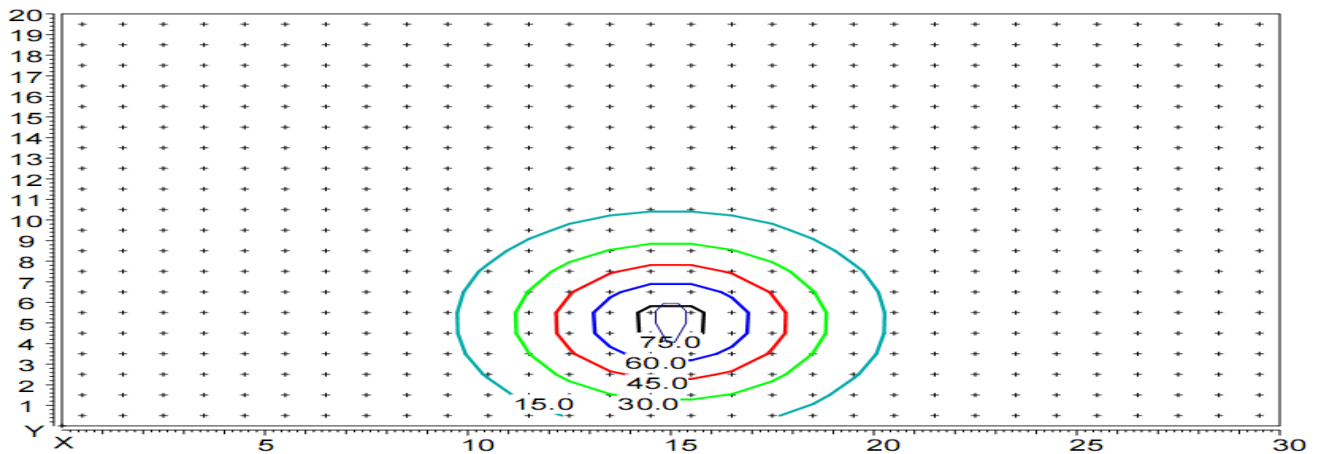
Luminaire light distribution of polar coordinates in the conditional flux 1000lm.



Luminaire light distribution of the 3D



Changing the light flux



Distribution of illumination in height hanging lamp 5 m.

Coordinates of the luminaire X=15m, Y=5m.

Part color: White

Color temperature of LEDs standard production 4200K.

According to customers' requirements temperature can be produce in the range from 2700K to 6500K.

Index of color rendering:

Color rendering of light sources is indicator of their capability to display realistically the colors of certain object. According to CIE (International Lighting Commission) index vary from 0 to 100, where 0 is worst and 100 is best

Group	R _a	Significance	Typical Application
1A	90..100	Exact color match	Galleries, medical examination, color processing
1B	80...90	Colors can be properly defined	Houses, hotels, offices, schools
2	60...80	Fair color rendering	Industry, office, schools
3	40...60	Color rendering is not a of big significance	Industry, sport arenas
4	20...40	Color rendering is not important	Street lighting

Standard lighting Cassiopeia is with index of color rendering CRI min 80
According to customer specification lamp can be produced with LED index CRI min 90

Operating temperature of the lamp is from -25 °C to +40 °C
Operating temperature of the lamp is from -25 °C to +40 °C

Certification

Luminaries Orion has full **CE** certification

Motion detectors

To all version of Cassiopeq lamps motion and light detectors can be mounted.

Description of the electrical connection assembly

Connection of the product to the electricity network is performed by qualified and pre instructed personal, qualified in the safety procedures. The cable coming out from the lamp has to be connected to the electricity network 230V-50Hz in the following order-brown cable is connected to L(phase), blue cable is connected to N(zero), yellowgreen cable has to be connected to ground

Description of the mechanical connection

Installation to be performed only by qualified and pre instructed personnel, trained in safety procedures. Installation is completed by 4 bolts M4x20

Working conditions, transportation and storage

Storage to be done in covered facilities with air temperature from -30 °C to +45 °C (up to 24 hours to +60 °C) with humidity 80%(with 86-106 Kpa) without the presence of any harmful agents, causing corrosion of the aluminum body. The lamp to be transport in the original packing provided by the producer.

Working condition of the luminary

- Power supply voltage- 198V to 264V
- Temperature interval—30 °C to +45 °C, with air humidity 80%(86-106Kpa)

Quality control

The device is controlled from the authorities of quality control and reply to the technical requirements. Replacing of components of the luminary has to be performed only with original parts supplied by the producer. Repair is performed only from authorized representative of the producer

Warranty conditions

LED luminaries from the series Cassiopeq have 60 months warranty from the date of sale. All eventual malfunctions during warranty period are 60 months from date of purchase. All eventual malfunctions in this period are repaired free of change in the conditions of:

- All conditions for installation, operation, transport and storage of the device



INDUSTRIAL LIGHTING LTD.

„Kremikovsko shose“ Str, № 15, 1839 Sofia, Bulgaria

phone: +359 2 945 4212, **fax:** +359 2 945 4145,

- There are no signs of attempts of opening the device and/or repair by non-authorized personal of Industrial lighting LTD

Producer's address:

“Industrial lighting” Ltd,

1839 Sofia, 15 Kremikovsko shose Str.,

e-mail: office@industriallighting.eu

web site: www.industriallighting.eu