

## SERIES LED LIGHTING TYPE „ERIDAN BP“

Series include following types of products:

**Eridan BP 20W100-230, Eridan 36W194-230 and Eridan 42W242-230;**

**Name of Producer: “INDUSTRIAL LIGHTING” LTD**

### **Purpose:**

The Series LED lighting type ERIDAN is created as middle class lightning designed to satisfy highest requirements for efficiency, durability and quality.

In the production of the product are used only high quality elements of European producers, as follows:



### **LEDs:**

Duris S5 – “Osram GmbH” Germany;

### **Power supply:**

TRIDONIC - Austria;

### **Diffusor:**

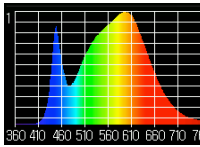
Diffused light with low glaring index UGR<19

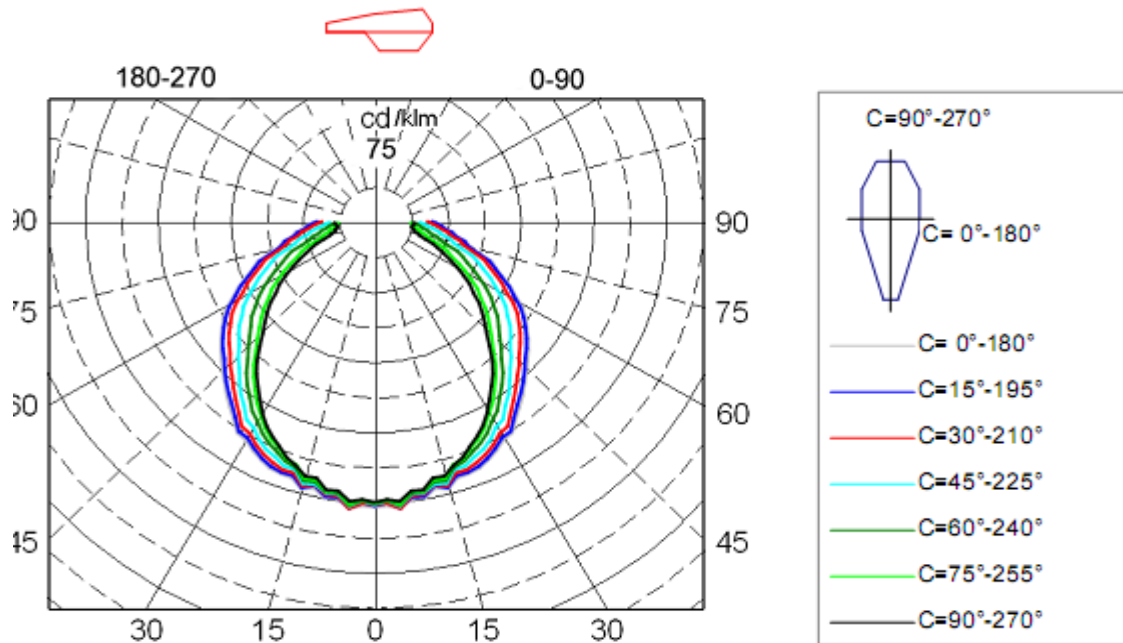
Technical parameters according producers documentation:

LED light for indoor and outdoor use with dimensions:

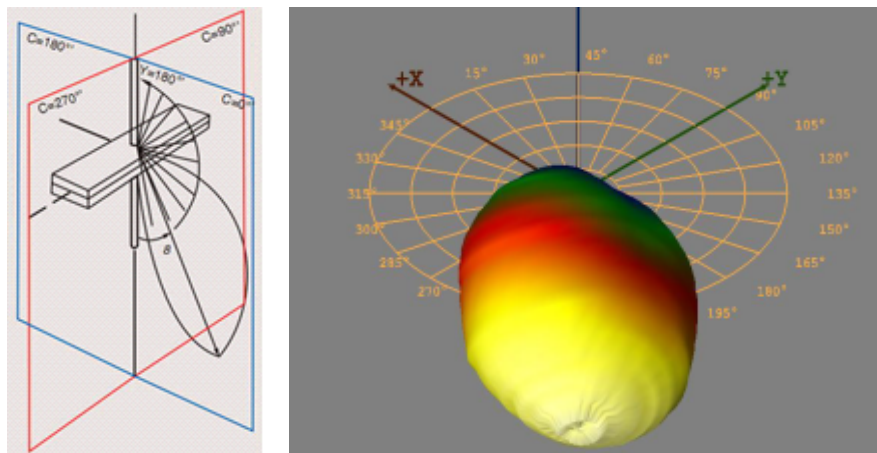
- 680/90/90mm. - 20 W,
- 1280/90/90mm. - 36 W,
- 1580/90/90mm. - 42 W;

Test results:

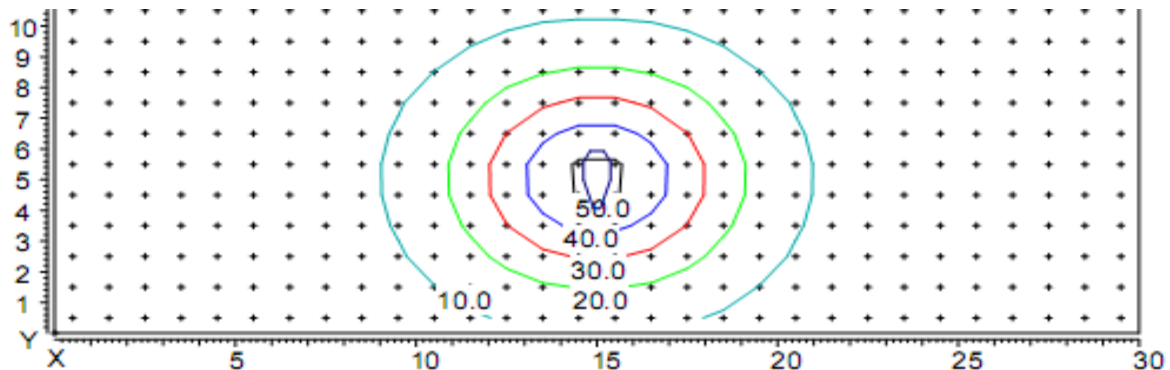
Product name Eridan BP	<b>20W100-230</b>	<b>36W194-230</b>	<b>42W242-230</b>	 <p>Light specter</p> <p>Pulsation of light = 36.5%</p>
operating voltage AC [V]	<b>230</b>			
weight [kg]	<b>1.6</b>	<b>1.8</b>	<b>2.5</b>	
wattage including balast [W]	<b>20</b>	<b>36</b>	<b>42</b>	
cos(φ)	<b>&gt;0.93</b>			
color temperature [K]	<b>3935 K</b>			
color rendering index CRI	<b>&gt;84</b>			
color coordinates CIE 1931	<b>x=0.3843, y=0.3786</b>			
color coordinates CIE 1976	<b>u'=0.2263, v'=0.5028</b>			
luminous flux emitted by a luminaire [lm]	<b>2440</b>	<b>4320</b>	<b>5200</b>	
light output of the luminaire [lm/W]	<b>120</b>	<b>120</b>	<b>120</b>	



Luminaire light distribution of polar coordinates in the conditional flux 1000lm.



Luminaire light distribution of the 3D



Distribution of illumination in height hanging lamp 5 m  
Coordinates of the luminaire X=15m, Y=5m.

**Color temperature of LEDs** standard production 4000 K.

According to customers requirements temperature can be produce in the range from 2700K to 6500K.

**Index of color rendering:**

Color rendering of light sources is indicator of their capability to display realistically the colors of certain object. According to CIE (International Lighting Commission) index vary from 0 to 100, where 0 is worst and 100 is best.

Group	Ra	Significance	Typical Application
1A	90..100	Exact color match	Galleries, medical examination, color processing
1B	80...90	Colors can be properly defined	Houses, hotels, offices, schools
2	60...80	Fair color rending	Industry, office, schools
3	40...60	Color rending is not a of big significance	Industry, sport arens
4	20...40	Color rending is not important	Street lightning

Standard lighting Eridan BP is with index of color rendering CRI min 80.

According to customer specification lamp can be produced with LED index CRI min 90.

**Degree of protection IP 65:**

The degree of protection of LED lighting bodies, which the corpus provides against penetration of foreign particles, dust, dirt and water

Luminaries Eridan BP provides:

Complete protection against contact, protection from infiltration of dust and protection from water projected from a nozzle (IP65).

### Degree of protection IK 08:

One of the key parameter of outdoor mounted luminaries is the high resistance of mechanical interference-defined in two digit code IK.

- From 0-lack of protection
- From 10-protection of interference equivalent of 20J energy

The degree of IK 08 is equivalent on hits with steel hammer with 1.7kg weight, falling on luminary body from 29,5 centimeters height.

High degree of resistance of mechanical interference is highly important in case where luminaries are used on streets, roads, sidewalks, in general when used in areas with concentrated vandalism activities.

### Certification:

Luminaries Eridan BP has full **CE** certification.

### Motion detectors:

All version of Eridan BP luminaries are designed to fit smoke detectors, smoke indicators, cameras, PIR sensors, microwave sensors (could be built invisible), audio speakers and etc.

.

- **Description of the electrical connection assembly:**

Connection of the product to the electricity network is performed by qualified and pre instructed personal, qualified in the safety procedures. The cable coming out from the lamp has to be connected to the electricity network 230V-50Hz in the following order-brown cable is connected to L(phase), blue cable is connected to N(zero), yellowgreen cable has to be connected to ground.

### Description of the mechanical connection:

Installation to be performed only by qualified and pre instructed personnel, trained in safety procedures.

### Working conditions, transportation and storage:

Storage to be done in covered facilities with air temperature from -30 °C to +55 °C (up to 24 hours to +70 °C) with humidity 80%(with 86-106 Kpa) without the presence of any harmful agents, causing corrosion of the aluminum body. The lamp to be transport in the original packing provided by the producer.

Working condition of the luminary

- Power supply voltage- 198V to 264V

- Temperature interval—20 °C to +50 °C, with air humidity 90%(86-106Kpa)

#### Quality control:

The device is controlled from the authorities of quality control and reply to the technical requirements. Replacing of components of the luminary has to be performed only with original parts supplied by the producer. Repair is performed only from authorized representative of the producer.

#### Warranty conditions:

LED luminaries from the series Eridan BP have 60 months warranty from the date of sale. All eventual malfunctions during warranty period are 60 months from date of purchase. All eventual malfunctions in this period are repaired free of charge in the conditions of:

- All conditions for installation, operation, transport and storage of the device
- There are no signs of attempts of opening the device and/or repair by non-authorized personal of Industrial lighting LTD

.

#### Producer's address:

“Industrial lighting” Ltd,  
1839 Sofia, 15 Kremikovsko shose Str.,  
**e-mail:** [office@industrialighting.eu](mailto:office@industrialighting.eu)  
**web site:** [www.industrialighting.eu](http://www.industrialighting.eu)